



Copyright

This document is provided for informational purposes only and Software FX, Inc. makes no warranties, either express or implied, in this document. Information in this document, including URL and other Internet Web site references, is subject to change without notice. The entire risk of the use or the results from the use of this document remains with the user. Unless otherwise noted, the example companies, organizations, products, domain names, e-mail addresses, logos, people, places, and events depicted herein are fictitious, and no association with any real company, organization, product, domain name, e-mail address, logo, person, place, or event is intended or should be inferred. Complying with all applicable copyright laws is the responsibility of the user. Without limiting the rights under copyright, no part of this document may be reproduced, stored in or introduced into a retrieval system, or transmitted in any form or by any means (electronic, mechanical, photocopying, recording, or otherwise), or for any purpose, without the express written permission of Software FX, Inc.

Software FX, Inc. may have patents, patent applications, trademarks, copyrights, or other intellectual property rights covering subject matter in this document. Except as expressly provided in any written license agreement from Software FX, Inc.; the furnishing of this document does not give you any license to these patents, trademarks, copyrights, or other intellectual property.

© 2010 Software FX, Inc. All rights reserved.

PowerGadgets is a registered trademark of Software FX, Inc. XenApp is registered trademark of Citrix.

Other names are trademarks or registered trademarks of their respective owners.

Table of Contents

Table of Contents	2
Table of Contents	2
What is PowerGadgets Mobile for XenApp?	4
PowerGadgets Requirements	4
Authoring a Gadget via the PowerGadgets Mobile Creator	5
Multiple Gadgets: Dashboards & Storyboards	5
The Grid	6
Positioning multiple controls.....	6
Resizing multiple controls.....	7
Devices	7
Populating PowerGadgets from Databases	8
Use Windows PowerShell	8
Use a SQL Database	9
Use from Web Services.....	11
Parameters	12
Refresh Rate	12
Publishing Your Gadget.....	13
Customizing a PowerGadgets Chart.....	22
Chart Wizard	22
Select Chart Gallery	22
Data	23
Adjust Data to Chart.....	23
Auto Format	23
Configure Axes and Panes	23
Configure Legends, Titles and Point Labels.....	24
Edit Chart In-Place	24
Enable Data Grid.....	24
Enable ToolBar	24
Advanced Settings	25
Customizing a PowerGadgets Gauge	28
Customizing a PowerGadgets Map	30
Map Wizard	30
Select a Map.....	30
Data	30
Adjust Data to Map	30
Auto Format	30
Configure Legend, Titles and Point Labels	31
Enable Data Grid.....	31
Enable ToolBar	31
Support.....	32
Trial Users	32
Standard Support.....	32
Priority Support Program.....	32
Free Online Support.....	32
Reporting a bug or an issue.	32
E-mail :.....	32
Community Forums:.....	32
Updates and Latest Documentation.....	32

Purchasing..... 33
Order Online 33
Taxes, Tariffs and Duties..... 33
Email 33
Phone..... 33
Fax..... 33
Partners & Resellers 33
Returns and Exchanges..... 33
Software FX Corporate Office..... 33
Index..... 34

What is PowerGadgets Mobile for XenApp?

PowerGadgets Mobile for XenApp is a data visualization solution by Software FX that takes advantage of Citrix's XenApp application virtualization product to deliver real-time charts, gauges, maps and dashboards to your mobile device. By taking advantage of Citrix Receiver for Mobile Devices, PowerGadgets makes these business intelligence tools available to all supported phones without much effort on the user's side. It requires no development environment or compilation making PowerGadgets a great reporting and monitoring solution for professionals who don't write code.

And by supporting all phones running Android, Blackberry OS as well as Windows Mobile Professional and iPhone, PowerGadgets becomes accessible to most smart phones (as well as other mobile devices) currently on the market.

In addition, PowerGadgets is visually and programmatically rich – scaling from vector-based graphics and managed .NET code - making it the perfect enterprise tool to report and monitor data from many sources, including but not limited to SQL Server, ODBC, Web Services, File System, Windows Management Instrumentation (WMI), Processes and even the Windows Registry. You can even use PowerGadgets to retrieve information from other Microsoft applications that are built on top of PowerShell such as Exchange Server (12), MOM and Virtual Machine Manager.

This Quick Start Guide will introduce you to the most interesting product features of PowerShell as well as introduce a few samples.

PowerGadgets Requirements

PowerGadgets requires minimal software to run and has a very small footprint. Before you install PowerGadgets, please make sure you have installed:

PowerGadgets Mobile Creator:

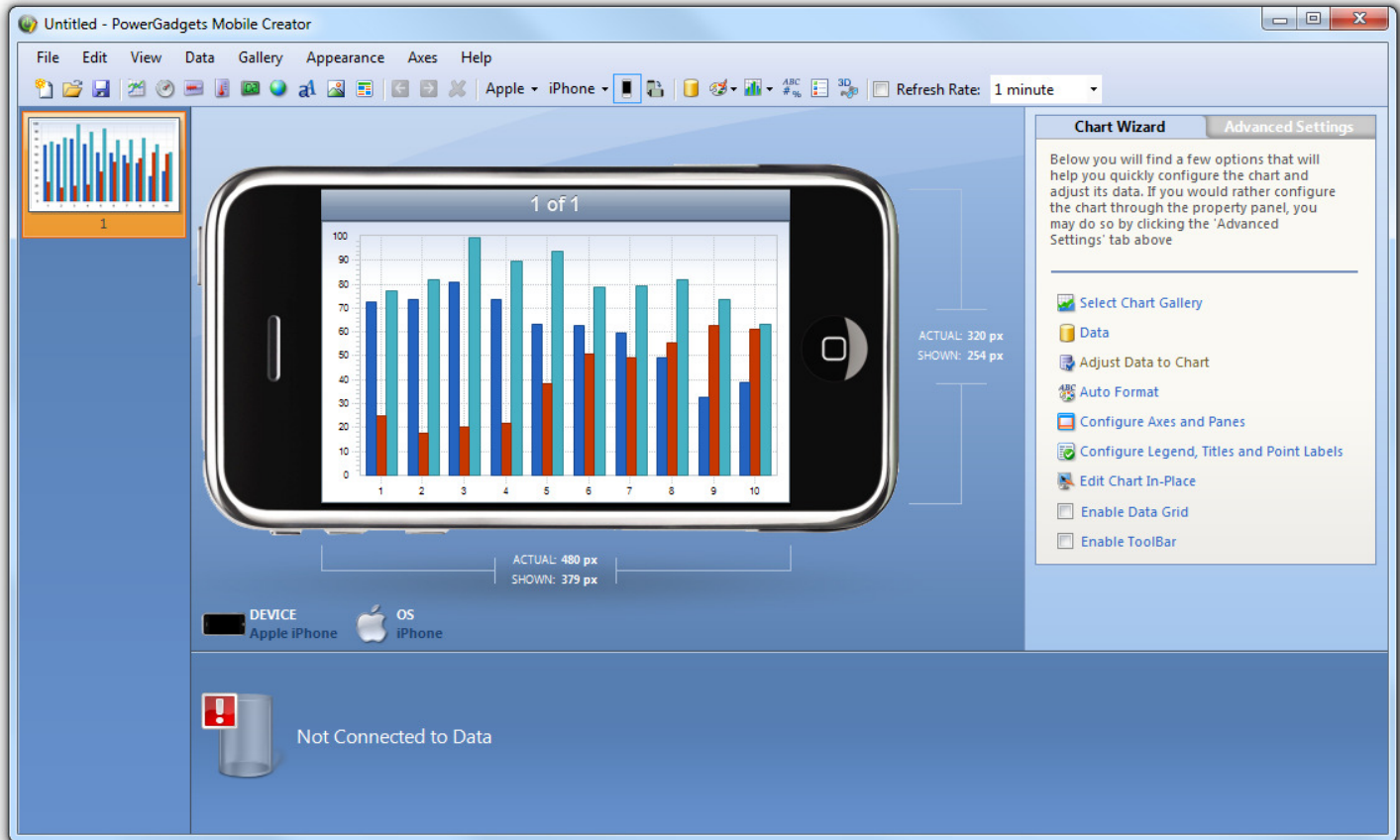
- .NET Framework 2.0
- Windows XP SP3, Windows Vista, Windows 7, Windows Server 2003 or Windows Server 2008.

PowerGadgets Mobile for XenApp:

- Citrix XenApp 5.0 or above
- Citrix Receiver for Mobile Devices

Authoring a Gadget via the PowerGadgets Mobile Creator

The PowerGadgets Mobile Creator is a fully functional GUI that lets you specify not just the gadget visual attributes but its data sources as well. It is an easy way to create the gadget and get it ready for deployment, even allowing you to preview your creation on different devices.



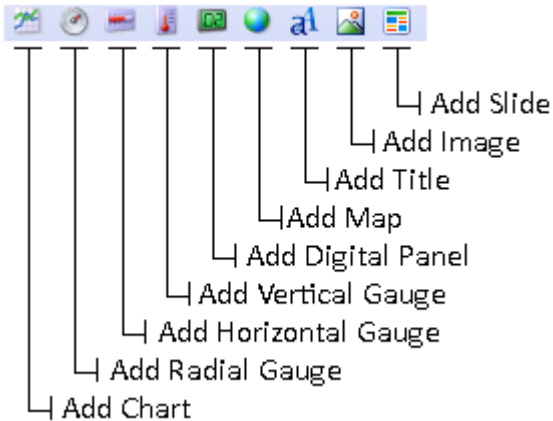
After running the installer, you will be given the choice to start the PowerGadgets Mobile Creator. Later, it can always be accessed from the Start menu.

Multiple Gadgets: Dashboards & Storyboards

Adding multiple Gadgets to a solution allows you to visualize different data on the same application as well as further understand your current data by interconnecting elements (creating dashboards). There are two different ways of adding a Gadget control to your solution: on a grid or on a slide. When you add a control to a slide that already contains a Gadget, a grid is created. You may control the size of each cell of the grid, allowing you to make sure your data is visible even on the smallest screens. If a grid becomes too crowded and you need more room, you may create another slide for your solution (thus creating a storyboard). The transition between slides is very natural, being as simple as swiping your finger over a touch screen capable device or clicking the arrows at the top of the slide. Some devices also support left and right arrows through the keyboard.

The Grid

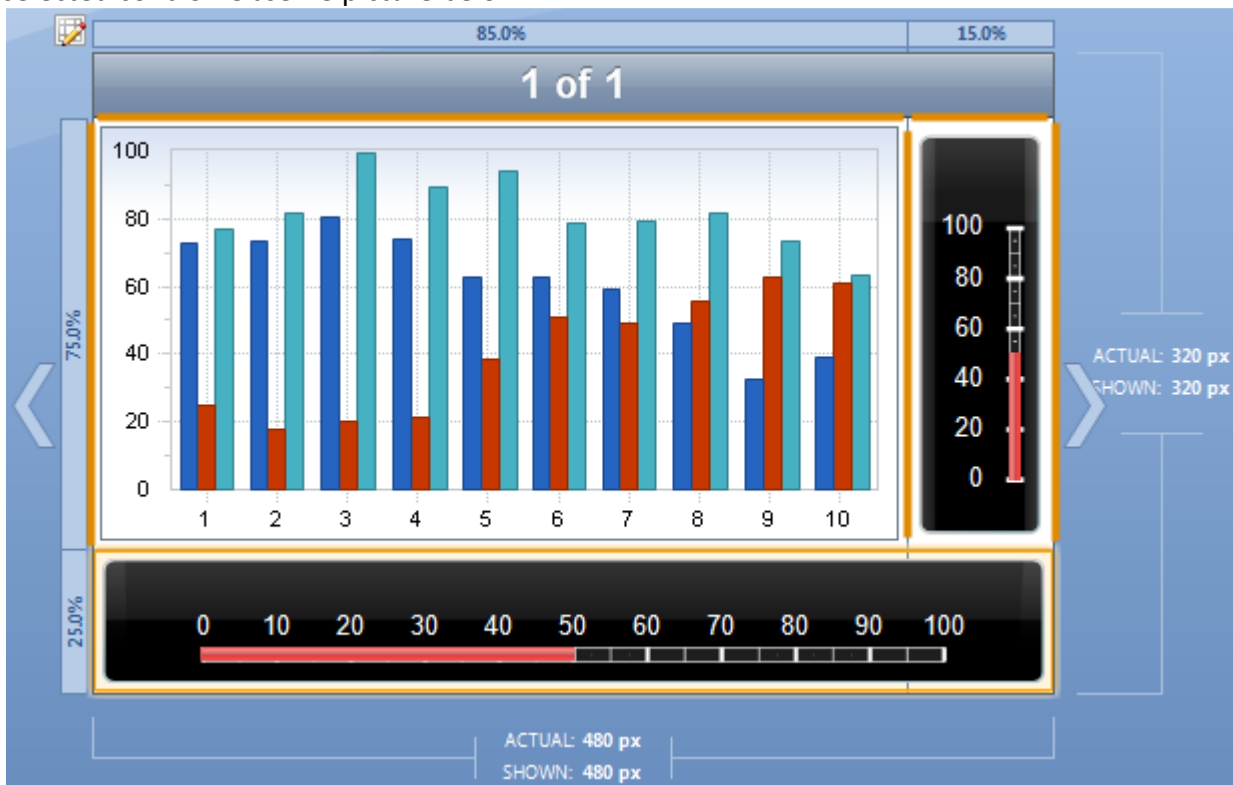
As previously mentioned creating a grid is as simple as adding more than one control to a slide. There are no restrictions on the combination of controls or on how many can be added. To add a control, simply click on the toolbar icon corresponding to the control you would like to add.



At this point PowerGadgets Mobile Creator will add the selected control to the slide, making a guess on how to position it.

Positioning multiple controls

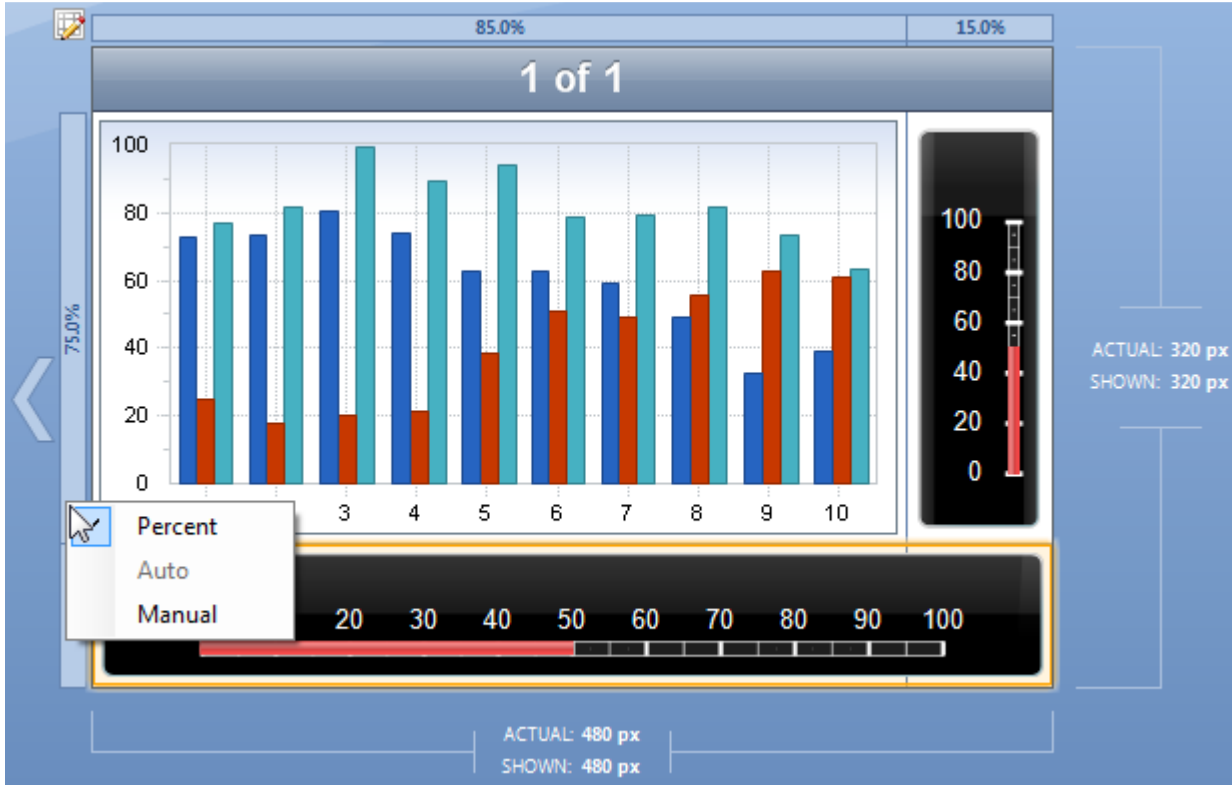
Controls can be rearranged within the grid with ease. Just drag and drop the control you would like to move in to the desired position. An orange outline marks the selected control and the thick orange bar denotes the new location. Dropping a control on top of the arrows to the side of the slide will create a new slide with the selected control. Observe picture below.



Resizing multiple controls

Cells within the grid can be resized by dragging its borders. Every control will automatically resize to take full advantage of the allowed space.

There are two different ways of setting the size of a cell containing a gadget, by percentage or by pixel size. To select between the two modes, right click on the cell header and select from the popup menu.



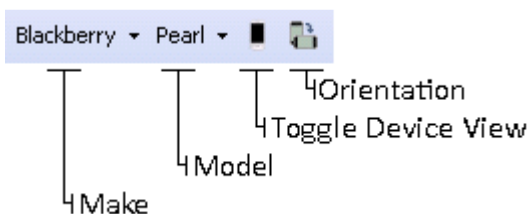
From the picture above you can see a third option, Auto. This option is enabled if the grid only contains Images or titles. The cell's size will obey the text or image.

When trying to decide the size of your cells, it is recommended that you try both portrait and landscape view for multiple devices. That way you can avoid having your gadgets becoming useless due to size constraints.

Devices

PowerGadgets Mobile for XenApp is compatible with any handset supported by Citrix Receiver for Mobile Devices. Having the wide spread support makes it easier to reach a broader audience, but the variation in screen resolutions becomes something to be accounted for. PowerGadgets Mobile Creator allows you to display your controls as seen on a variety of devices, allowing you to make sure your data is clearly legible by everyone.

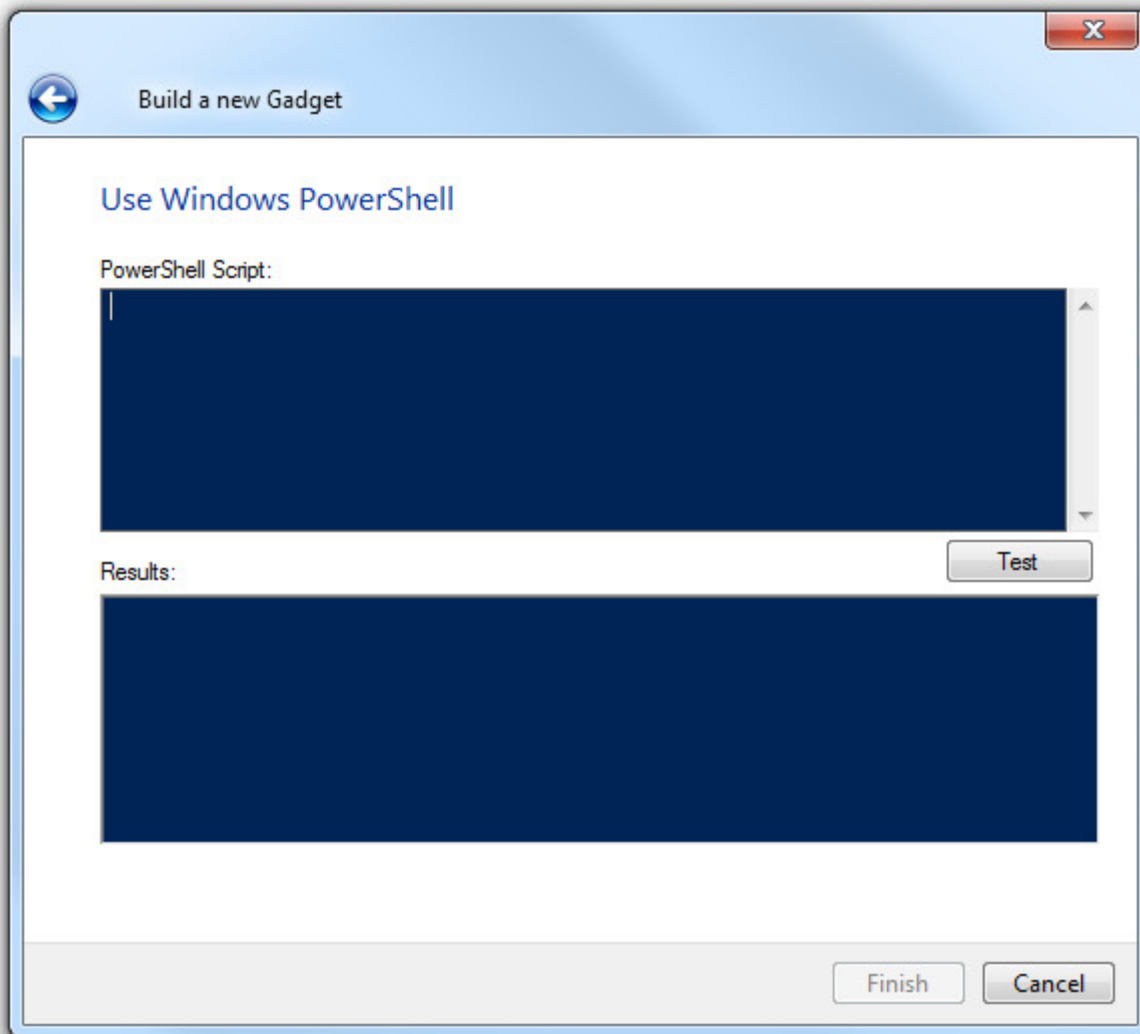
You can visualize your Gadget in different devices, toggle the skin on and off as well as switch between landscape and portrait from the menu (under View), or from the toolbar.



Populating PowerGadgets from Databases

Use Windows PowerShell

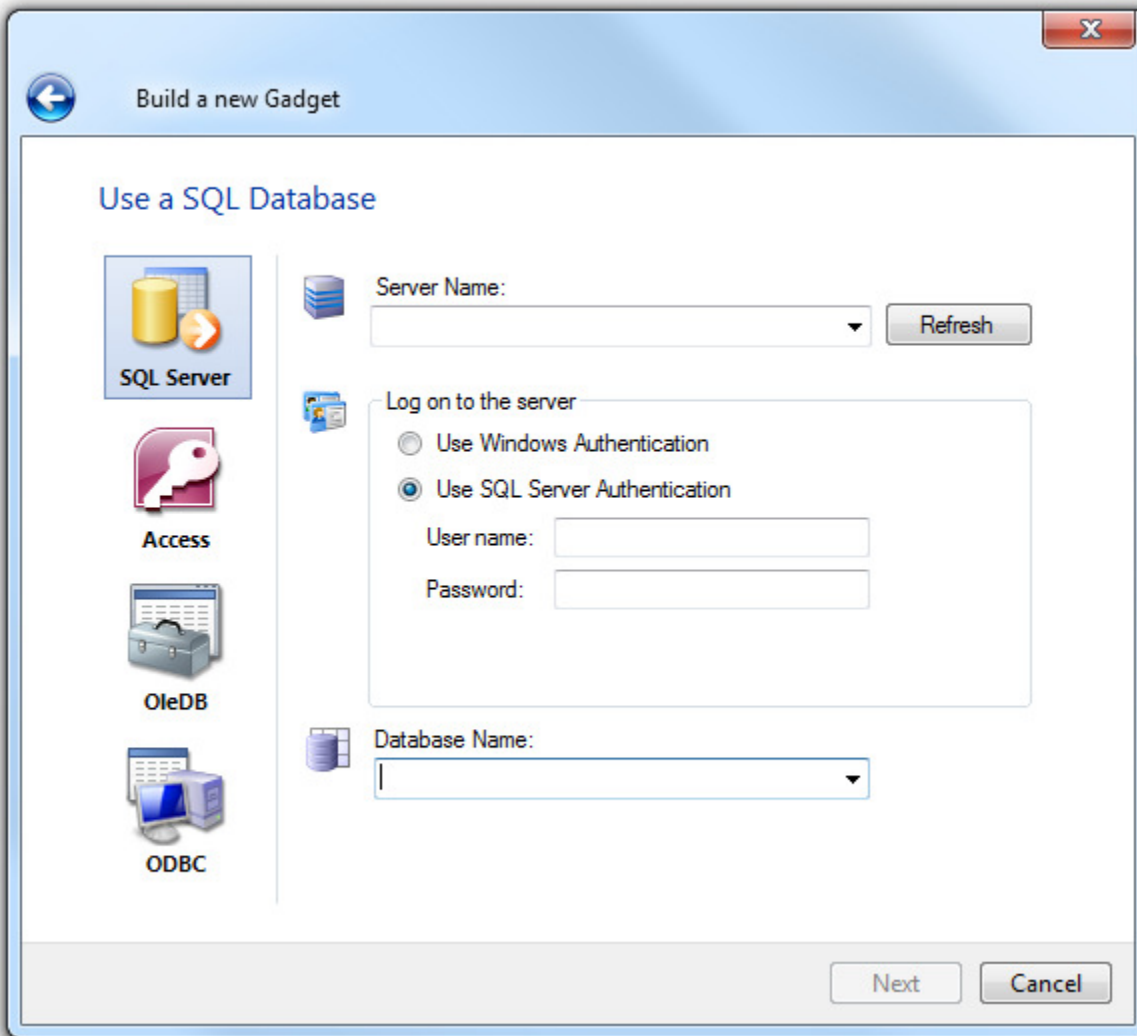
PowerGadgets is a great way to monitor systems from remote locations. With that in mind we have developed a way to populate your gadget straight from PowerShell. Create scripts that generate the data you need to display and insert it on the PowerShell Script field.



Keep in mind that the data can be further formatted from the Adjust Data to Chart option on the wizard. More details can be found on later chapters of this guide.

Use a SQL Database

The most popular way of populating a gadget is from a SQL Database. Directly from the creator, you may use a SQL Server, Access file, OleDB or ODBC database to get your data.



The screenshot shows a window titled "Build a new Gadget" with a close button in the top right corner. The main content area is titled "Use a SQL Database". On the left side, there is a vertical list of four options, each with an icon and a label: "SQL Server" (with a yellow cylinder icon), "Access" (with a purple key icon), "OleDB" (with a blue briefcase icon), and "ODBC" (with a blue computer monitor icon). The "SQL Server" option is currently selected and highlighted. To the right of this list, there are several input fields and controls: a "Server Name:" dropdown menu with a "Refresh" button to its right; a "Log on to the server" section containing two radio buttons: "Use Windows Authentication" (unselected) and "Use SQL Server Authentication" (selected); two text input fields labeled "User name:" and "Password:"; and a "Database Name:" dropdown menu. At the bottom right of the window, there are two buttons: "Next" and "Cancel".

A user name and password are necessary for most databases. Therefore a decision needs to be made whether or not that information is going to be stored in the PGF. Note that the PGF is a clear text file so anyone with access to it would potentially be able to see the log in information by opening the file with a text editor. Although the log in information is saved as clear text by default, PowerGadgets offers you the choice to prompt the user or encrypt the information. Just click on the “Settings” link that is displayed after you input the password.



Use from Web Services

The web service paradigm is rapidly being adopted throughout the industry from basic prototypes to fully fledged online API exposure for first class web sites such as EBay or Amazon. PowerGadgets leverages this paradigm by allowing you to populate your gadget from a web service.

The following are parameters required for invoking the web service:

- Web Service WSDL – Specifies the web service description language either in the form of a web based URL or file.
- Method to invoke – The name of the method to execute.

Prior to making use of a web service, you have to determine what type of information the web service returns and then appropriately associate this information to one of the gadgets. A web service can supply a primitive value or an array of primitive values such as an integer or double, however a web service can also supply complex objects multiple properties. After configuring the web service to be used, the data can be further specified using "Adjust Data to Chart", from the Chart Wizard menu.

Parameters

When connecting to your data source, you may use parameters in your query. Parameters are defined on the query string by starting with the @ symbol. Here is an example:

Select firstname, rating from Agents where brokerage_id=@myParam

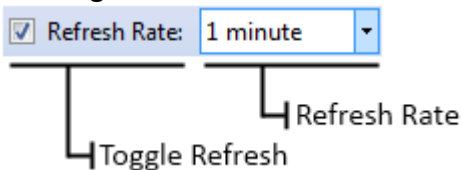
If parameters are used, you will be presented with a dialog to configure your parameters. You may change the title of your parameter, define default and other values and even decide when will the user will be prompted to select a value.

The screenshot shows a dialog box titled "Build a new Gadget" with a sub-section "Set Parameters for your data". On the left, a list of parameters contains one entry: "9 myParam". To the right, the configuration for "myParam" is shown. The "Title" field contains "myParam" and the "Prompt" dropdown is set to "First Time". Under "Default Value", the "Custom" radio button is selected with a value of "0", and the "Ambient" radio button is unselected with a dropdown set to "Current Year". Below this is a "Predefined Values" table with columns "Name" and "Value". The table contains three rows: "Robert" with value "0", "Jane" with value "1", and "Karl" with value "2". The "Karl" row is highlighted. To the right of the table are "Add" and "Remove" buttons. At the bottom left of the table area is a checkbox labeled "Allow Only Predefined Values" which is currently unchecked. At the bottom right of the dialog are "Finish" and "Cancel" buttons.

Name	Value
Robert	0
Jane	1
Karl	2

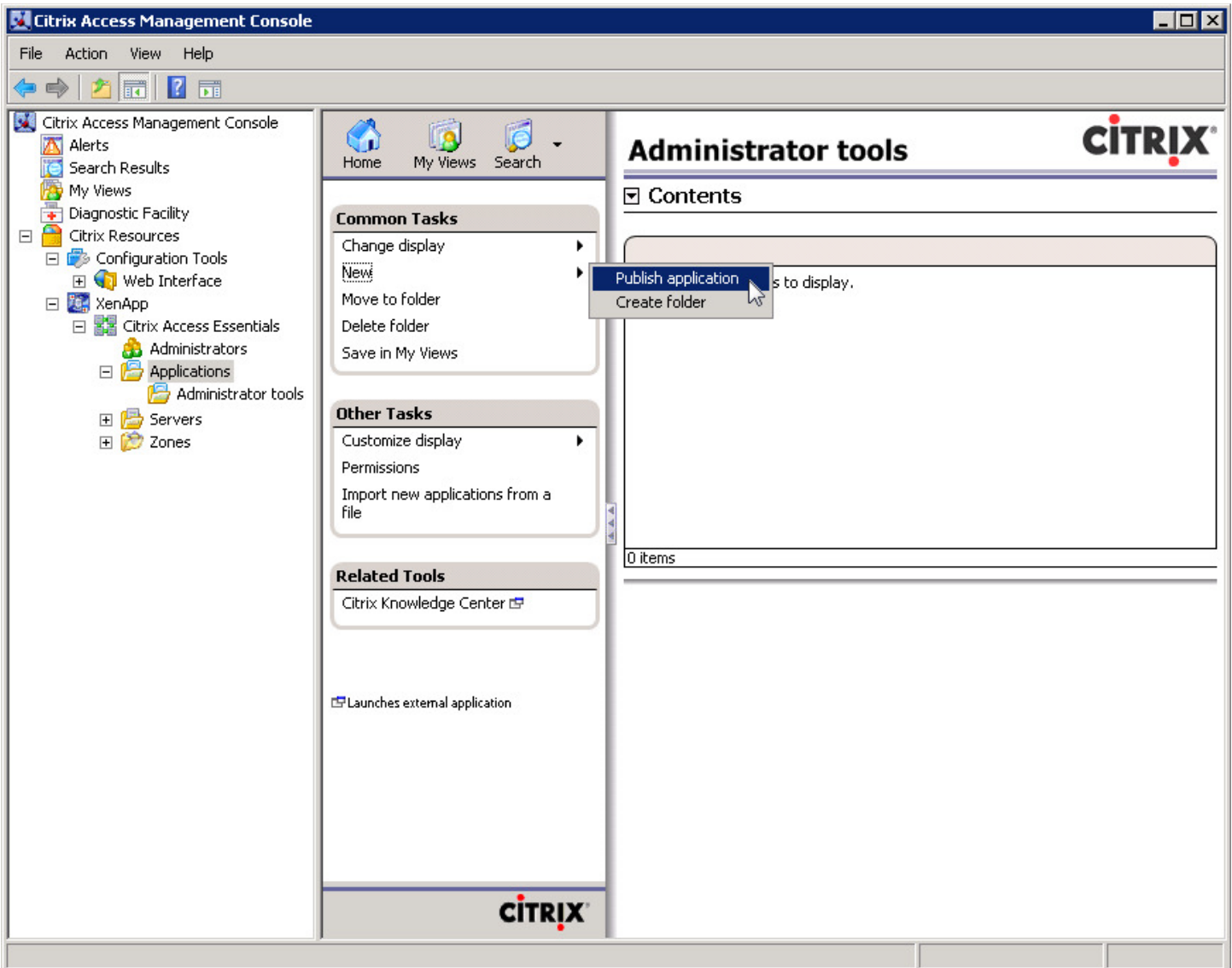
Refresh Rate

After connecting your gadget to a data source, you may choose to have the presenter refresh the data at a specified interval, ranging from 5 seconds to 1 hour. This can be done from the Data menu on the menu bar, or straight from the toolbar.



Publishing Your Gadget

PowerGadgets Mobile for XenApp gadgets publishes as an application in the Citrix Access Management Console. Start by launching the *Citrix Access Management Console* on your server (usually under *Start>All Programs>Citrix>Management Consoles*). Just as with any other application, you need to navigate to your Application folder and click *New>Publish application* (under Common Tasks).



You will be prompted to give a name and a description on the first screen of the wizard.

My Dashboard - Publish Application

CITRIX

Name

Steps

- ✓ Welcome
- Basic**
- ▶ **Name**
- Type
- Location
- Servers
- Users
- Shortcut presentation
- Publish immediately

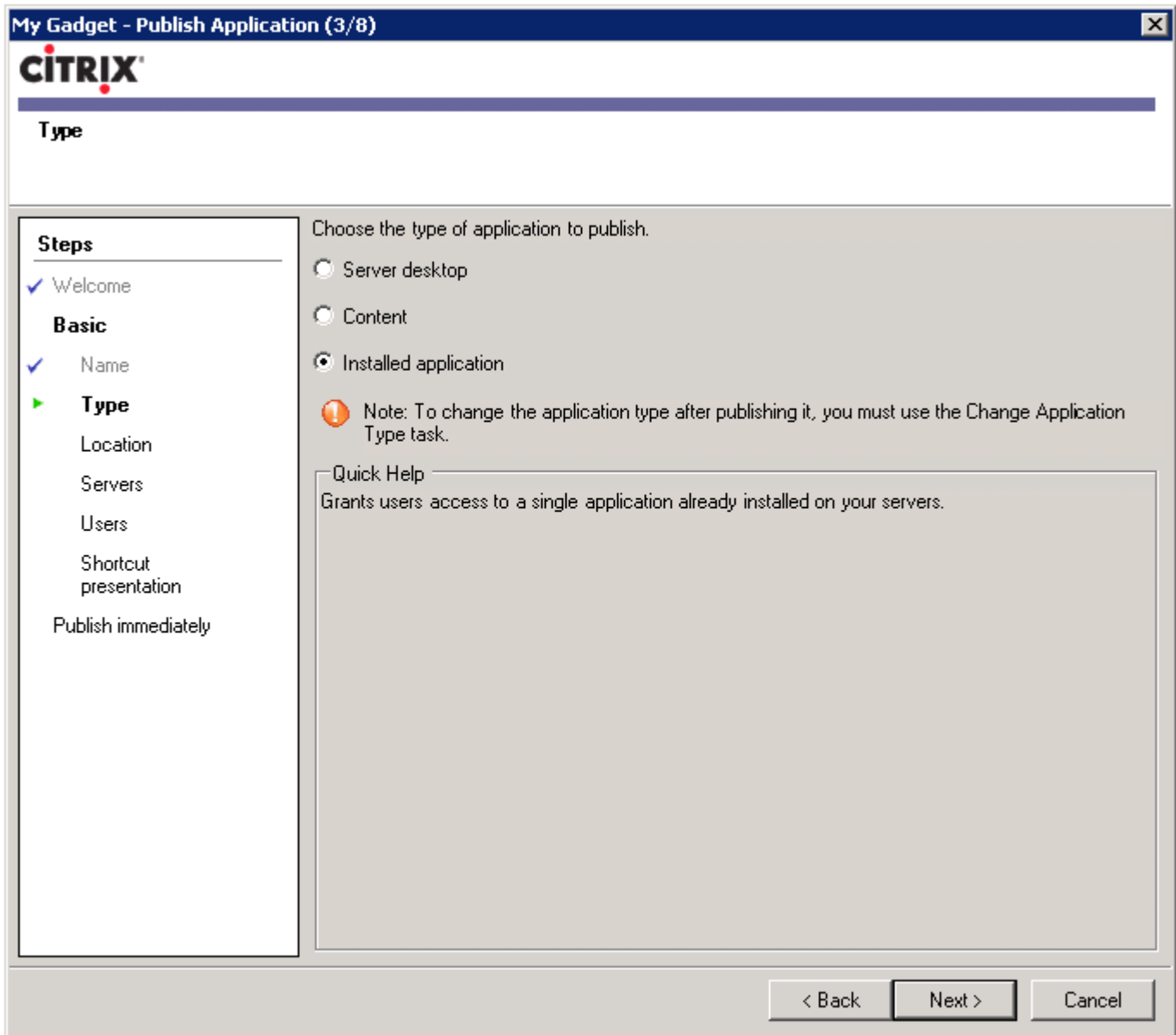
Enter the name and description that you want to be displayed to clients for this application.

Display name:
My Dashboard

Application description:
Dashboard using PowerGadgets

< Back Next > Cancel

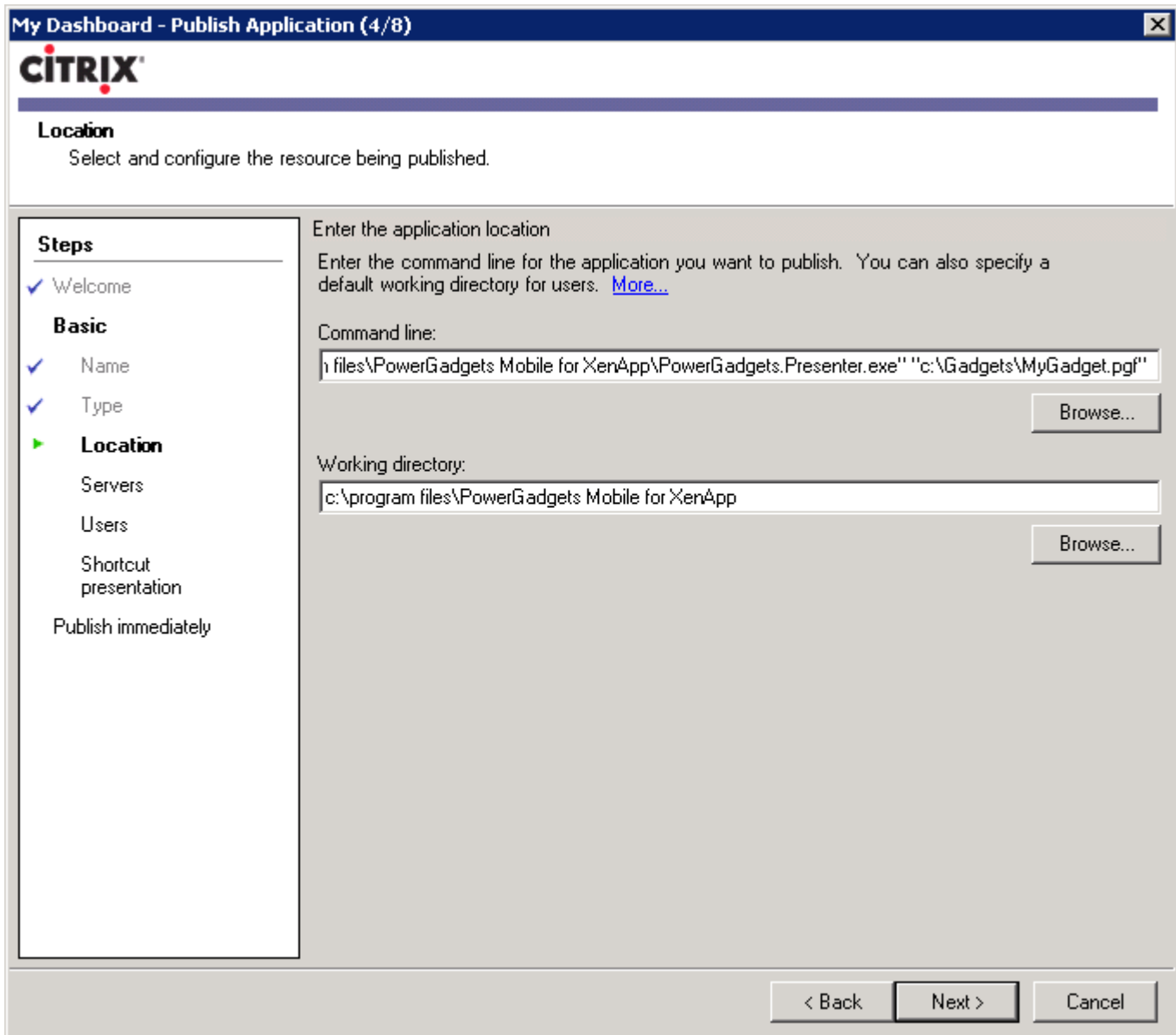
After selecting a name, make sure you select *“Installed Application”* under *“Choose the type of application to publish”*.



Next you need to locate the PowerGadgets Presenter (usually in C:\Program Files\PowerGadgets Mobile for XenApp\) and add the PGF location and file name as a parameter and add that as the command line. Make sure to use quotes if there are spaces on folders or file names. For example:

“c:\Program Files\PowerGadgets Mobile for XenApp\PowerGadgets.Presenter.exe”

“c:\Gadgets\MyGadget.pgf”



The next screen will allow you to select on which server the gadget will be published.

My Dashboard - Publish Application (5/8)

CITRIX

Servers
Configure which servers will host the application.

Steps

- ✓ Welcome
- Basic**
- ✓ Name
- ✓ Type
- ✓ Location
- ▶ **Servers**
- Users
- Shortcut presentation
- Publish immediately

Choose the servers on which this published application will run when being delivered via ICA.

Servers:

Name	Relative location	Application location
XENAPPSERVER	Servers	Default

1 item

Add... Edit... Remove Import from file...

< Back Next > Cancel

After selecting the desired servers, you will select which users are allowed to access the gadget.

My Dashboard - Publish Application (6/8)

CITRIX

Users
Configure the users who may access the application.

Steps

- ✓ Welcome
- Basic**
- ✓ Name
- ✓ Type
- ✓ Location
- ✓ Servers
- ▶ **Users**
- Shortcut presentation
- Publish immediately

Specify the users who can access this application.
To add users, choose a directory type at the bottom and select Add. [More...](#)

Allow anonymous users
 Allow only configured users

Configured users:

Select directory type: Citrix User Selector

Add... Remove

< Back Next > Cancel

By default a gadget will have the PowerGadget icon. This can be changed on this next screen.

My Dashboard - Publish Application (7/8) X

CITRIX

Shortcut presentation

Steps


- ✓ Welcome
- Basic**
- ✓ Name
- ✓ Type
- ✓ Location
- ✓ Servers
- ✓ Users
- ▶ **Shortcut presentation**

Publish immediately

Configure the appearance and location of the application shortcut.

These settings function differently on different clients. [More...](#)

Application icon

Icon:  Change icon...

Client application folder:

Application shortcut placement

Add to the client's Start menu

Place under Programs folder (Citrix XenApp plugin only)

Start menu folder (Citrix XenApp plugin only):

Add shortcut to the client's desktop

< Back Next > Cancel

It is recommended that you specify the size of the gadget to match the display of the target mobile device. To do so, make sure to select *Configure advanced application settings now* on this screen.

My Dashboard - Publish Application (8/12)

CITRIX

Publish immediately

Steps

- ✓ Welcome
- ✓ Basic
- ✓ Name
- ✓ Type
- ✓ Location
- ✓ Servers
- ✓ Users
- ✓ Shortcut presentation
- ▶ **Publish immediately**

Advanced

- Content redirection
- Limits
- Client options
- Appearance

The essential settings for this application have been configured.

When the wizard is finished, the application will be available to the configured users immediately. If you don't want the application to be available immediately, you can disable it until you are ready.

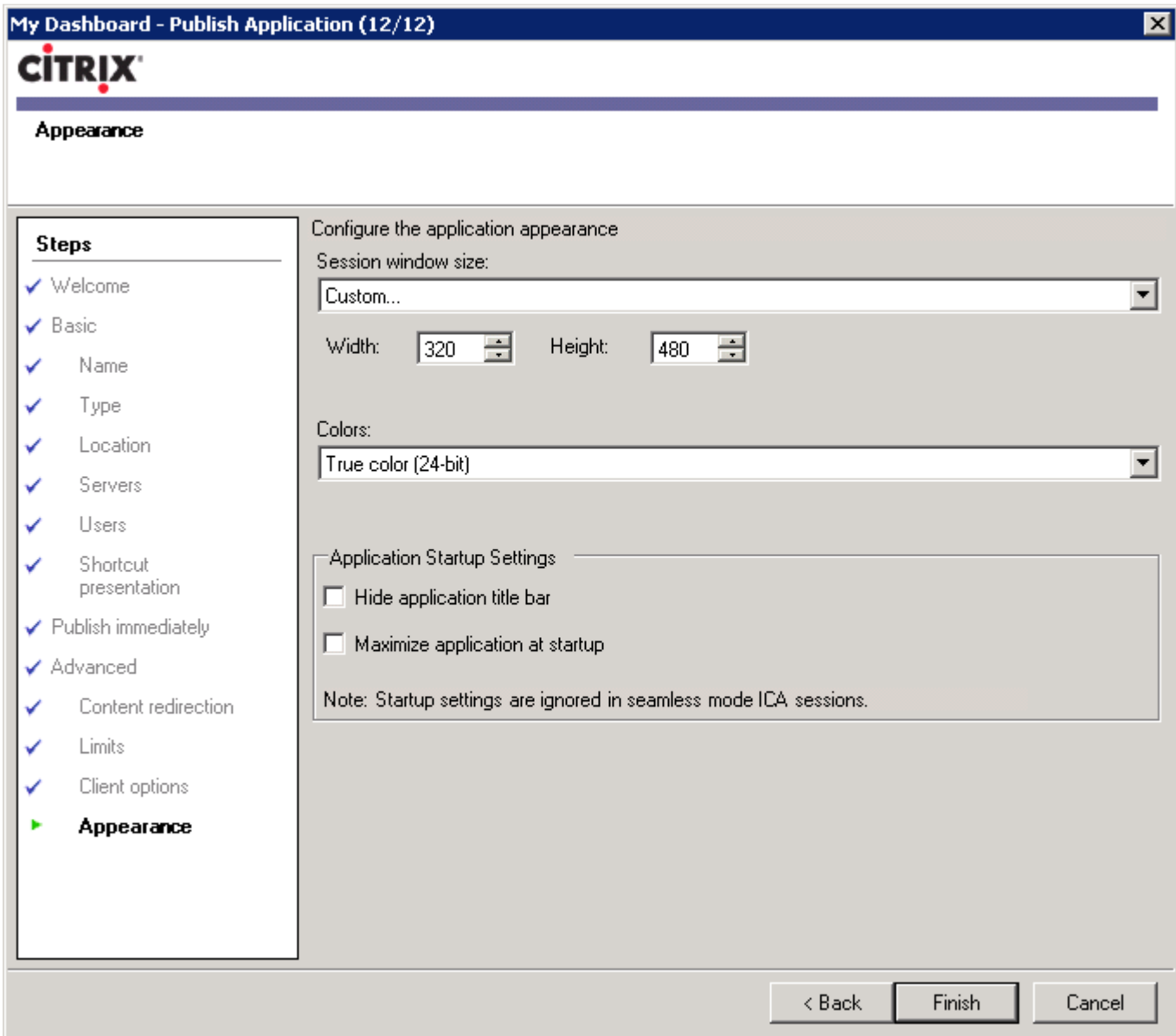
Disable application initially

Advanced application settings default to the most common settings and are not required to be set for the application to be available to users. You can configure these settings now, or you can configure them later using the application Properties tasks.

Configure advanced application settings now

< Back Next > Cancel

The appearance options will be on the last screen of the wizard. On the screenshot below the Custom size selected will match the screen of an iPhone.



Publishing your gadget as an application allows you to run more than one gadget at the same time. While in most devices it is preferred to run one gadget at a time and use the slide or grid to display multiple components, some devices have enough real estate to allow multiple instances of PowerGadgets to run at a time. To achieve this, create a batch file (you may use any text editor and save the text file as .bat) and make a list of the pgf file you wish to run. The parameters `_size` and `_position` allows you to design the look of your dashboard. Follow the format below:

```
start [PowerGadgetsPresenter] [PgfNameAndLocation] /_size:[Width],[Height] /_position:[Left],[Top]
```

Here is an example:

```
start "c:\Program Files\PowerGadgets Mobile for XenApp\PowerGadgets.Presenter.exe"  
C:\Gadgets\HospitalAdmissions.pgf /_size:380,480 /_position:0,0  
start "c:\Program Files\PowerGadgets Mobile for XenApp\PowerGadgets.Presenter.exe"  
C:\Gadgets\HospitalRevenue.pgf /_size:380,480 /_position:384,0  
start "c:\Program Files\PowerGadgets Mobile for XenApp\PowerGadgets.Presenter.exe"  
C:\Gadgets\HospitalStaffReview.pgf /_size:380,480 /_position:0,505  
start "c:\Program Files\PowerGadgets Mobile for XenApp\PowerGadgets.Presenter.exe"  
C:\Gadgets\CustomerService.pgf /_size:380,480 /_position:384,505
```

Tips and Tricks

Android

The current version of Citrix Receiver for Android does not allow you to fit the remote desktop to the screen of the device yet. You may zoom in and out just like the Android's web browser. The recommended setting for the Session Window Size is Full Screen.

iPhone

On the home screen, make sure you got to Settings, Display Options, Session Resolution and change from Default to Fit Screen. The deployed applications work better if Session Window Size is set to Custom (480x320) to match the screen of the device.

Windows Mobile

Windows Mobile Citrix Receiver application allows you to set the Session Resolution per application. Make sure to adjust to whichever resolution works best for the gadget you are working with.

Samples

The installer comes with a few samples to get you started. You may deploy them as you would any other Gadget, with the exception that since the sample uses a Compact SQL Database, the corresponding file (.sdf) needs to stay on the same folder as the pgf file. Also, only one user is allowed to log in on the Compact SQL Database, so only one user can see the sample at a time.

Customizing a PowerGadgets Chart

Chart Wizard

Select Chart Gallery

Bars, lines, scatter and even financial charts. There are many different galleries available to use on your chart. Depending on your data, change your Gallery to better visualize your data. From this menu you may also select between 2D or 3D charts and even create combination of different galleries.

Data

If you have skipped this part while creating your gadget, or if you need to change the data source for any reason, this is the place to do it. For more details on how to populate your chart, please read “Populating PowerGadgets” section of this Quick Start Guide.

Adjust Data to Chart

After populating your chart, you may adjust the data to exclude undesired columns and also reorder and rename the series.

Auto Format

For your convenience we have created a set of palettes that can be used on your gadget. Selecting a color scheme will modify the color of multiple components of your chart to generate a great looking chart. You can also start from a scheme and personalize items individually for a more custom look. Borders and backgrounds (from gradients to custom images) can be modified from here as well.

Configure Axes and Panes

The chart gadget will try to accommodate your data and automatically create axes to give it context. If you are not satisfied with the axis or need more options, use this menu. You can modify the way the labels are displayed and control gridlines.

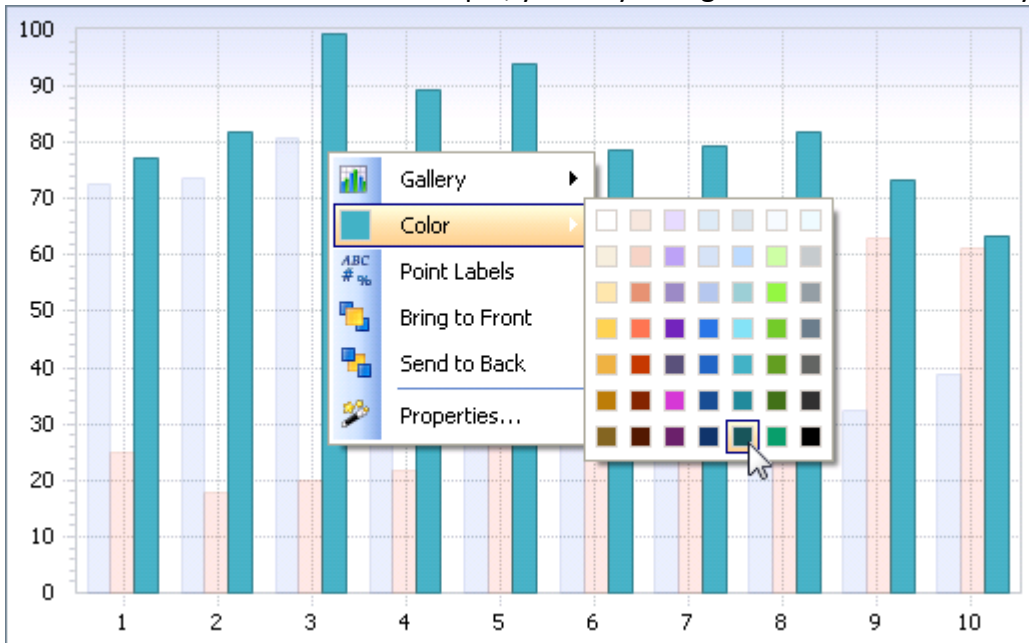
Also from this menu, you may create a secondary Y axis or extra panes. If there is a large difference between values on different series, adding a secondary Y axis or pane may help data comprehension.

Configure Legends, Titles and Point Labels

A legend box, titles and point labels may be added to better describe your data. Since size is usually an issue when dealing with mobile devices, these features are turned off by default. You may turn them on individually and configure them from this menu.

Edit Chart In-Place

This option will enable context menus on the chart. After selecting it, right click on different parts of the chart for further customization. For example, you may change the color of a series by right clicking one of its points.



There are different context menus for different parts of the chart. Series, plot area, legend box and axes are examples of chart components that can be customized while editing the chart in-place.

Enable Data Grid

Toggles the display status of the Data Grid. For real estate purposes it is disabled by default.

Enable ToolBar

The ToolBar allows the end user to customize the chart up to a certain point. Note that even if enabled it will not display on the creator. To preview, save your gadget and reopen with the presenter.

Advanced Settings

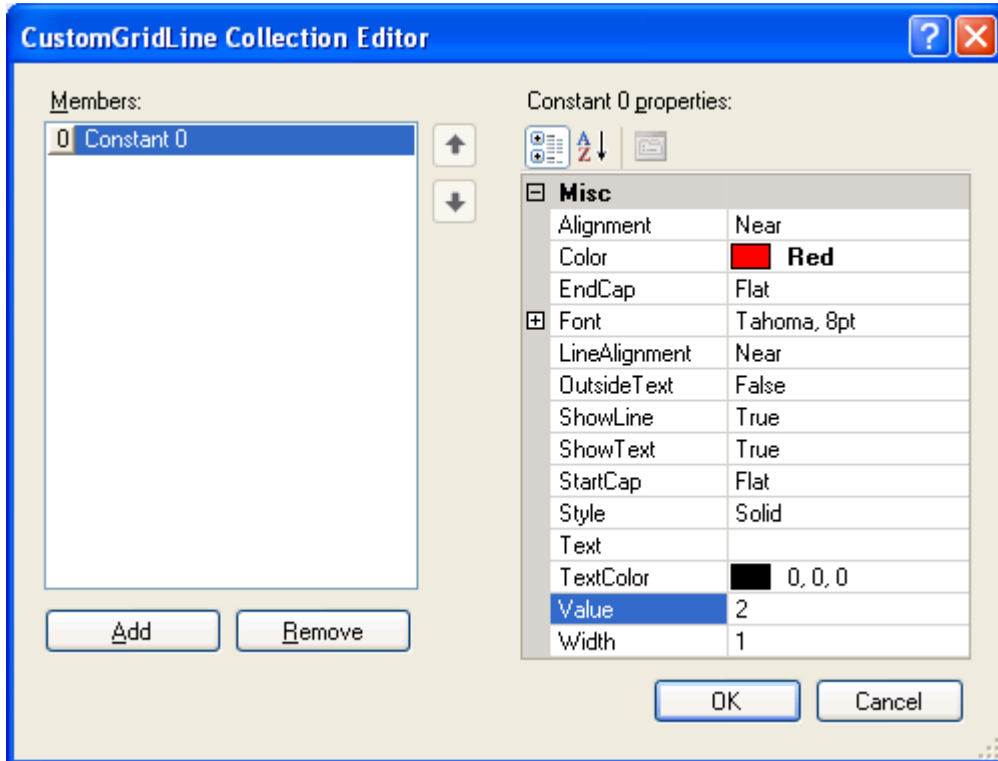
The chart gadget is very customizable. To keep things simple we have created the Chart Wizard which lets you access the most common properties rather easily. But if you need to go beyond that, there are many other options on the Advanced Settings menu. The Advanced Settings menu allows you to see the property grid for the chart. Here is what the grid looks like.

Chart Wizard		Advanced Settings
Appearance		
Background	Gradient	
Border	Simple Border	
Font	Tahoma, 8pt	
ForeColor	0, 0, 0	
Palette	Default	
PlotAreaColor	Transparent	
Attributes		
AllSeries	Global Attributes	
ConditionalAttributes	0 Items	
DataGrid	Data Grid	
Gallery	Lines	
LegendBox	Legend Box	
Series	3 Items	
View3D	3D Attributes	
Axes And Titles		
AxesStyle	FlatFrame	
AxisX	Main X Axis	
AxisY	Main Y Axis	
AxisY2	Secondary Y Axis	
Panes	1 Items	
Titles	0 Items	
User Interaction		
ContextMenus	True	
Highlight	Highlight Attributes	
Personalize	Personalization Attribute	
ToolBar	ToolBar	
ToolTips	True	
Window		
Anchor	TopLeft	
Caption	PowerGadgets	
Floating	False	
Group		
Location	-1, -1	
Modal	False	
Name		
RefreshInterval	00:01:00	
Sidebar		
Size	0, 0	
TopMost	False	

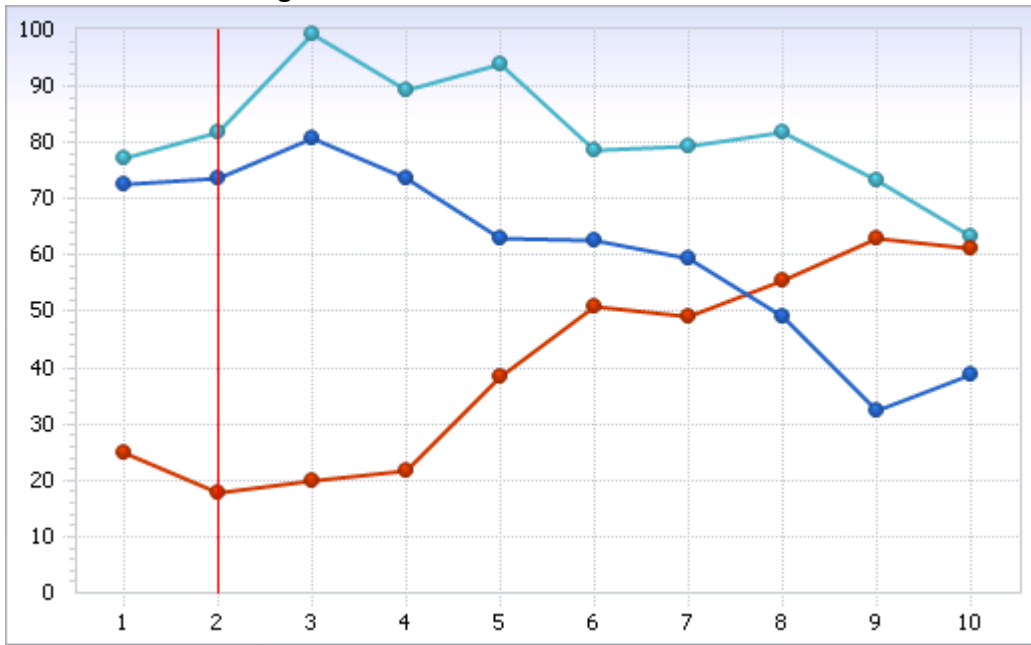
For example, if you need to add a custom grid line to the X Axis of your chart, expand the AxisX property click on CustomGridLines and then on the “...” button that appears.

Axes And Titles	
AxesStyle	FlatFrame
AxisX	
AxisX	Main X Axis
AutoScroll	False
CustomGridLines	0 Items ...
FirstLabel	0

Add and customize a new member to the collection on the CustomGridLine Collection Editor...




And the new custom grid line will be added to the chart.

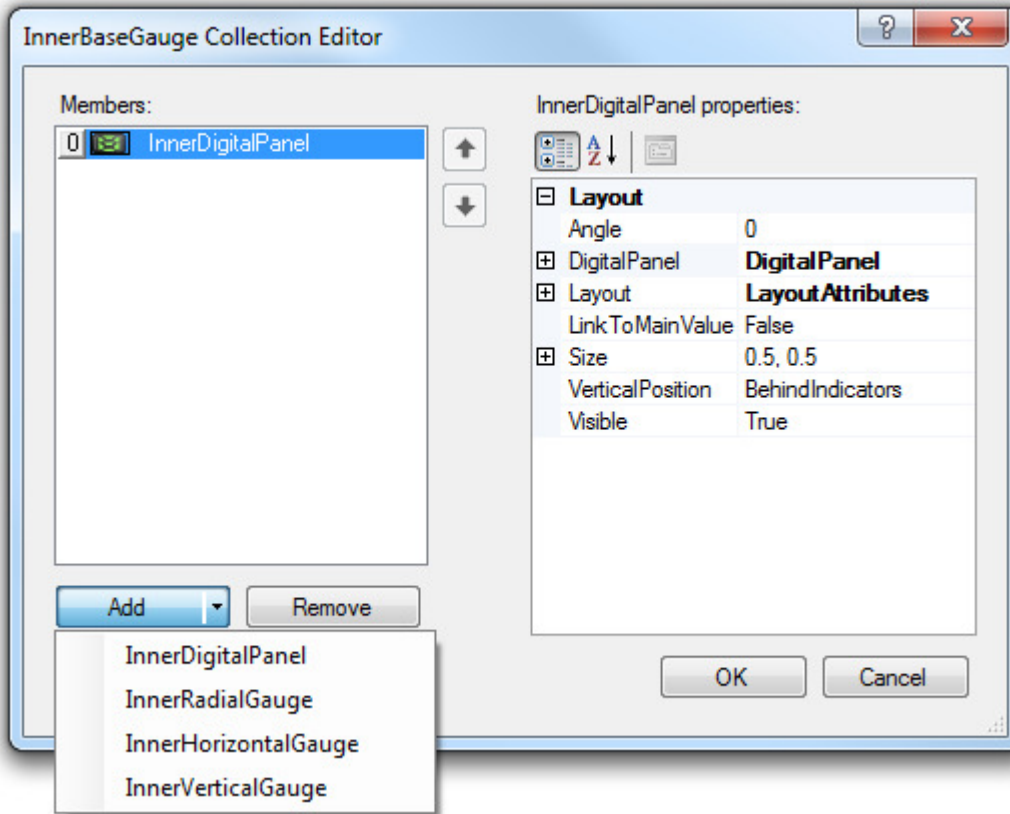


Customizing a PowerGadgets Gauge

Once you have decided which type of gauge better suites your needs, it can be customized from the Advanced Settings menu.

Gauge Type	Advanced Settings
[-] Appearance	
Antialiasing	All
BackColor	<input type="checkbox"/> Transparent
[-] Border	RadialBorder
[-] Font	Segoe UI, Larger
Palette	BlackForest
Shadow	None
Style	0
[-] Behavior	
Images	(Collection)
InnerGauges	(Collection)
[-] MainIndicator	 Main Needle
[-] MainScale	Main RadialScale (0, 100)
[-] Scales	(Collection)
Titles	(Collection)
ToolTip	
ToolTipEnabled	True
[-] Data	
MainValue	50
[-] Window	
Caption	PowerGadgets
Floating	False
Group	
Modal	False
RefreshInterval	00:30:00
Sidebar	
TopMost	False

From functional to cosmetic changes, much can be done using this menu. For example, to add a inner digital panel (or any other gauge) inside a radial gauge, click the InnerGauge item and then on the “...” button that appears. The InnerBaseGauge Collection Editor window will be displayed. Click on the Add button to add a new member. Note the arrow next to the Add button, which allows you to add different types of gauges as an inner gauge.



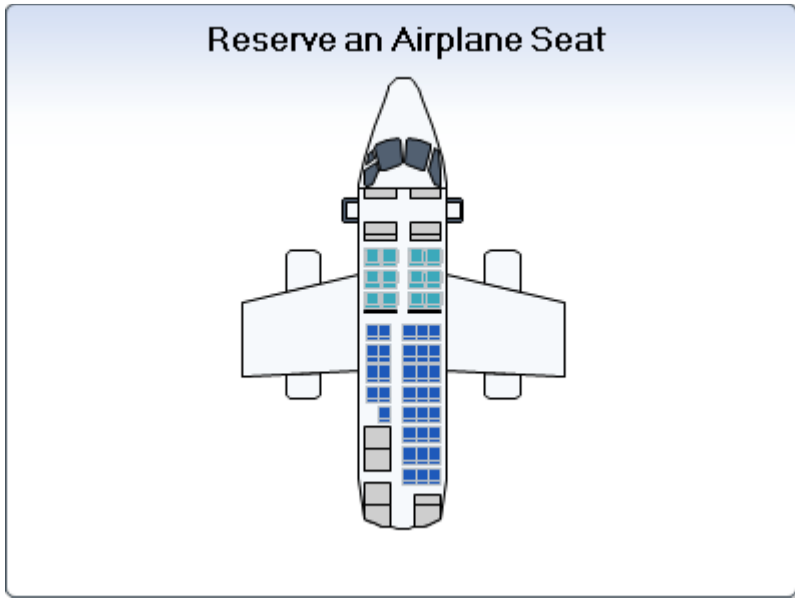
You can now customize the inner gauge on its Advanced Settings menu. For instance, you can control the Layout of the inner gauge from the Layout property. Below the Layout Target has been set to AnchorPoint, which allows you to define the position visually.



Different scales, images and titles can be added to the gauge in a very similar way.

Customizing a PowerGadgets Map

Maps allow you to combine cutting edge graphical map representation with the dynamic functionality of PowerGadgets. We provide you with a full library of world continents, countries, U.S. states, counties and zip code maps, so you can have fully functional map gadgets in virtually minutes. Also, by creating your own proprietary SVG's, Maps possibilities are endless. Here for example, we customized Maps for an airline reservation sample gadget.



Map Wizard

Select a Map

PowerGadgets Mobile Creator comes loaded with maps ranging from world maps, continents even states divided by zip codes. If you are using a custom map, place it on the Custom Maps folder and it will be added to this list (by default C:\Program Files\PowerGadgets Mobile Creator\Maps\Custom Maps). Please contact Software FX at support@softwarefx.com for additional information on how to prepare an SVG file to be used with PowerGadgets.

Data

If you have skipped this part while creating your gadget, or if you need to change the data source for any reason, this is the place to do it. For more details on how to populate your map, please read "Populating PowerGadgets" section of this Quick Start Guide.

Adjust Data to Map

After populating your chart, you may adjust the data to exclude undesired columns and also reorder and rename the series.

Auto Format

For your convenience we have created a set of palettes that can be used on your gadget. Selecting a color scheme will modify the color of multiple components of your chart to generate a great looking chart. You can also start from a scheme and personalize items individually for a more custom look. Borders and backgrounds (from gradients to custom images) can be modified from here as well.

Configure Legend, Titles and Point Labels

A legend box, titles and point labels may be added to better describe your data. Since size is usually an issue when dealing with mobile devices, these features are turned off by default. You may turn them on individually and configure them from this menu.

Enable Data Grid

Toggles the display status of the Data Grid. For real estate purposes it is disabled by default.

Enable ToolBar

The ToolBar allows the end user to customize the chart up to a certain point. Note that even if enabled it will not display on the creator. To preview, save your gadget and reopen with the presenter.

Support

At Software FX, we strive to provide our customers with the most comprehensive support options for Chart FX products. Below you will find a list of resources and support options available to quickly get you up to speed and help you generate the most advanced charts using Chart FX.

Trial Users

Trial users get 30 days of free e-mail and phone support during the evaluation period (starting from date of download). Please include your trial serial number when contacting support.

Standard Support

Owners of any Chart FX product receive 30 days of free e-mail and phone support from date of purchase OR 1 free incident beyond the 30 days per serial number. To obtain support, simply include your product serial number along with the details of your issue when communicating with support.

Priority Support Program

Owners of any Chart FX product may sign up for a full one year subscription of direct phone and e-mail contact with our tech support staff. A support account is required for this option. To purchase a support account, please click [here](#). Once obtained, please include your support account # when communicating with support.

Free Online Support

All Chart FX users have free access to our online support at support.softwarefx.com which includes hundreds of Knowledge Base articles, FAQ's, community, as well as product patches and samples, 24 hours a day, 365 days a year.

Reporting a bug or an issue.

If you encounter a bug or an issue, there are two options to report it:

E-mail :

support@softwarefx.com

Community Forums:

<http://community.softwarefx.com/forums/>

Updates and Latest Documentation.

For the latest version of Grid FX as well as updated documentation, please visit <http://support.softwarefx.com/>

Purchasing

Order Online

Using our secure Electronic Software Delivery system (<https://www.softwarefx.com/esd/>), you can download your software immediately when paying via credit card. If you need to pay with an alternate method (U.S. check, wire transfer or purchase order), please contact sales@softwarefx.com or use one of the contact methods below to submit your order.

Taxes, Tariffs and Duties

Any import taxes, tariffs or duties imposed by the destination country will not be reflected in your order total and will be your responsibility to pay if incurred. Please keep this in mind when making your order.

Email

You may email your order along with your contact and billing information to an email address below. One of our sales staff will contact you and arrange that your software is shipped out promptly.

Phone

You can phone in your order, toll free, if you prefer. A salesperson will take your order and expedite its shipping.

Fax

Please download our PDF Order Form (<http://www.softwarefx.com/SfxOrder/orderForm.pdf>). Proceed to complete the form electronically or manually and fax it to the fax number provided.

Partners & Resellers

You may also choose to purchase Software FX products through any of our global Partners & Resellers.

Returns and Exchanges

Please contact our sales department if you need to request a return or exchange. You will be sent an RMA form to fill out and return if purchase was made within 30 days. A 15% re-stocking fee applies in most cases. No returns of any type will be accepted without an RMA number. Electronically delivered (emailed) software cannot be returned. Please read the Terms and Conditions.

Software FX Corporate Office

5901 Broken Sound Parkway
Suite 400
Boca Raton, FL 33487 USA

Toll Free: (800) 392-4278

Phone: (561) 999-8888

Fax: (561) 392-3328
(561) 998-2383

Email: sales@softwarefx.com

Index

_position, 21
_size, 21
Access, 9
Android, 4
Auto Sizing, 7
Axes, 22
Batch file, 21
Blackberry, 4
Citrix Access Management Console, 13
Configuration, Chart, 22-24
Configuration, Gauge, 27-28
Configuration, Map, 29-230
Connection string, 9
Credentials, 10
Dashboards, 5, 21
Data, Powershell, 8
Data, SQL Database, 9
Data, Access, 9
Data, OleDb, 9
Data, ODBC , 9
Data, Web Services, 11
Data, Parameters, 12
Data, Real Time, 12
Devices, 4, 7
Encrypted, 10
Gallery, 22
Grid, 5-6
Images, 7
iPhone, 4
Multitasking, 21
ODBC, 9
OleDb, 9
Orientation, 7
Panels, 22
Parameters, 12
Password, 10
Percentage, 7
Pixel Size, 7
Positioning, 5
PowerGadgets Mobile Creator, 5
PowerGadgets Mobile for XenApp, 4
Powershell, 8
Publish, 13-22
Real Time, 12
Refresh Rate, 12
Requirements, 4
Resizing, 5
Script, Powershell, 8
Session Window Size, 21
Skin, 7
SQL Database, 9
Storyboards, 5
Symbian, 4
Titles, 7
Web Services, 11
Windows Mobile Professional, 4
Wizard, Chart, 22
WSDL, 11