



# Chart FX for Java

Chart FX for Java is a 100% Java component that uses JSP technology to produce charts in a variety of formats: PNG, JPEG, SVG and FLASH. Developed using JDK 1.4, it supports J2EE 1.3 and J2SE 1.4. Chart FX for Java is available as a server-side Bean that runs on most popular Java Application Servers, with features like borders, gradients, alpha blending, anti-aliasing and transparency.

Additionally, it produces native Windows output in the form of a .NET component. Easy data population from JDBC, XML, Text Files, API and other popular data sources. Includes a Designer, which is a stand-alone tool to set the visual attributes of the chart, and a Resource Center containing the Programmers Guide, the Javadoc API and hundreds of samples.



## A more friendly Java charting solution!

- Free Designer Included
- Unlimited CPUs per server
- Additional Production Server Discounts Available
- Reasonable Support Renewal
- Produces PNG, JPEG, SVG, Flash and .NET active charts
- Resource Center of Javadoc API, documentation and time-saving samples

```

<%@page import="SoftwareFX.ChartFX.*"%><html>
<head>
<title>Combination: Bar Chart with Area</title>
</head>
<body>
<%
ChartServer chart1 = new ChartServer(application, request, response);
chart1.openData(COD.VALUES, 2, 5);
chart1.setValue(0, 0, 0.5);
chart1.setValue(0, 1, 0.75);
chart1.setValue(0, 2, 0.91);
chart1.setValue(0, 3, 0.98);
chart1.setValue(0, 4, 0.72);
chart1.setValue(1, 0, 232815);
chart1.setValue(1, 1, 678192);
chart1.setValue(1, 2, 655234);
chart1.setValue(1, 3, 891230);
chart1.setValue(1, 4, 533988);
chart1.closeData(COD.VALUES);

SeriesAttributes series = chart1.getSeries(0);
series.setGallery(Gallery.AREA);
series.setAxis(XAxis.SECONDARY);

series = chart1.getSeries(1);
series.setGallery(Gallery.BAR);
series.setAxis(XAxis.PRIMARY);
series.setCylSides(short 32);

series = chart1.getSeries(2);
series.setAxis(XAxis.PRIMARY);
series.setMin((float) 0.5);
series.setMax(1);
series.setStep(0.05);
series.setVisible(true);
series.setAxis(Y().setGridlines(true);
    
```

◀ In Forté creating a .NET Component. Chart FX for Java is the only component that can output as a .NET active charts.

▲ Chart FX for Java on a Linux machine. It's a server-side Java Bean, so you'll enjoy pure Java code and the convenience of simple server deployment.

### Chart FX for Java Resource Center

Intuitive programmer's guide that integrates a collection of the full documentation of the Chart FX for Java features, the Javadoc API and hundreds of time-saving samples.

### Chart FX for Java Designer

A stand-alone chart template generator. You can create XML files containing all the visual attributes you desire for your chart then export and import them into your charts.



# Chart FX for Java

## Chart FX for Java and JavaServer Faces and Java Studio Creator

Java Server Faces is a Java specification that provides a single application programming interface set for creating interoperable components for application servers and component libraries. With JSF, developers can quickly build web applications by assembling reusable UI components in a page; connecting these components to an application data source; and wiring client-generated events to server-side event handlers.

Complex controls like Chart FX will benefit the most from the specification, and will provide Java developers and end-users with the most advanced UI and data visualization components since they involve many complex processes like data connectivity, producing HTML-compliant output and maintaining state.

JavaServer Faces provides component-state management, page navigation,

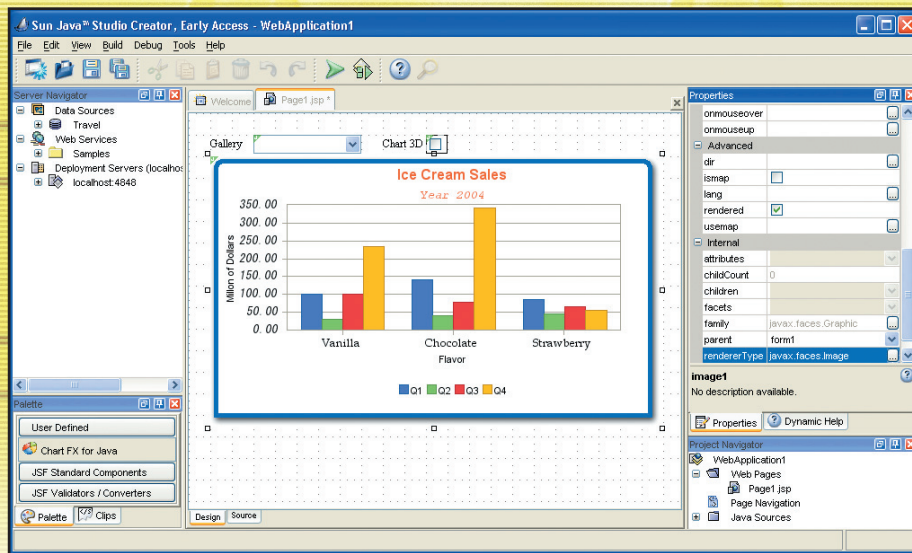
```
<@taglib uri="http://java.sun.com/jsf/html" />
<@taglib uri="http://java.sun.com/jsf/core" />
<@taglib uri="/WEB-INF/chartfxTags.tld" prefix="c" />

<f:view>
  <c:chart id="chart1"
    width="500"
    height="300"
    gallery="BAR"
    chart3D="False"
    templateXMI="E:\Java\Tomcat 5.0\webapp
  <c:axis index="2">
    <c:font name="Book Antiqua" style="font-size: 12px;" />
    <c:title index="0" text="Flavor">
      <c:font name="Book Antiqua" style="font-size: 12px;" />
    </c:title>
  </c:axis>
  </c:chart>
</f:view>
```

and event handling, which will allow developers to create highly interactive web solutions, with a logic that will communicate back and forth with the server without losing the settings and values.

Support to JSF is provided by supplying a JSF-compliant UI component and a Java Server Pages (JSP) custom tag library for expressing a JSF interface within a JSP page.

JSF provides features that Chart FX for Java can take full advantage, especially integration to the Java Studio Creator IDE, which will allow developers to quickly integrate Chart FX for Java into their web applications through a design time experience.



**COMMUNITY  
FREE  
EDITION**

**Now Available!  
FREE Download.**

The Chart FX for Java Community Edition is a FREE, non-expiring, development-only version of Chart FX for Java that allows the development of charts for the Java environment. All features, platform support, documentation and functions are exactly the same as the full version, without the ability to deploy. Download it today and feel free to share it with your Java community.

**Especially Focused on  
Performance & Scalability!**

Chart FX for Java was designed as a web application, charting component with performance and scalability built into its very core. It provides tune-up mechanisms and properties that allow developers and system admins to easily boost performance under particular server configurations. So, a web application, that includes Chart FX for Java, can be as fast as you decide. Learn more at [www.softwarefx.com/java](http://www.softwarefx.com/java).



[Learn more about the Chart FX solutions...](#)

Software FX began in 1993 with one idea in mind, creating the most powerful, yet easy to use, data visualization solutions for developers. Today, Chart FX positions itself as the worldwide leader in helping developers integrate and display graphical information between and among diverse markets, platforms and environments.

